



# TECHNICAL INFORMATION (T048-T054; n11)

**ERWIN – T048/T049**

**SARAH – T050/T051**

**FELIX – T052/T053**

**MANU – T054**

**Spare Part Group n11**

# GLAZING

## RECOMMENDATION FOR OPTICAL LENSES:

- Base curve 5 fits best
- Other base curves (3 – 6) possible
- All lens materials possible

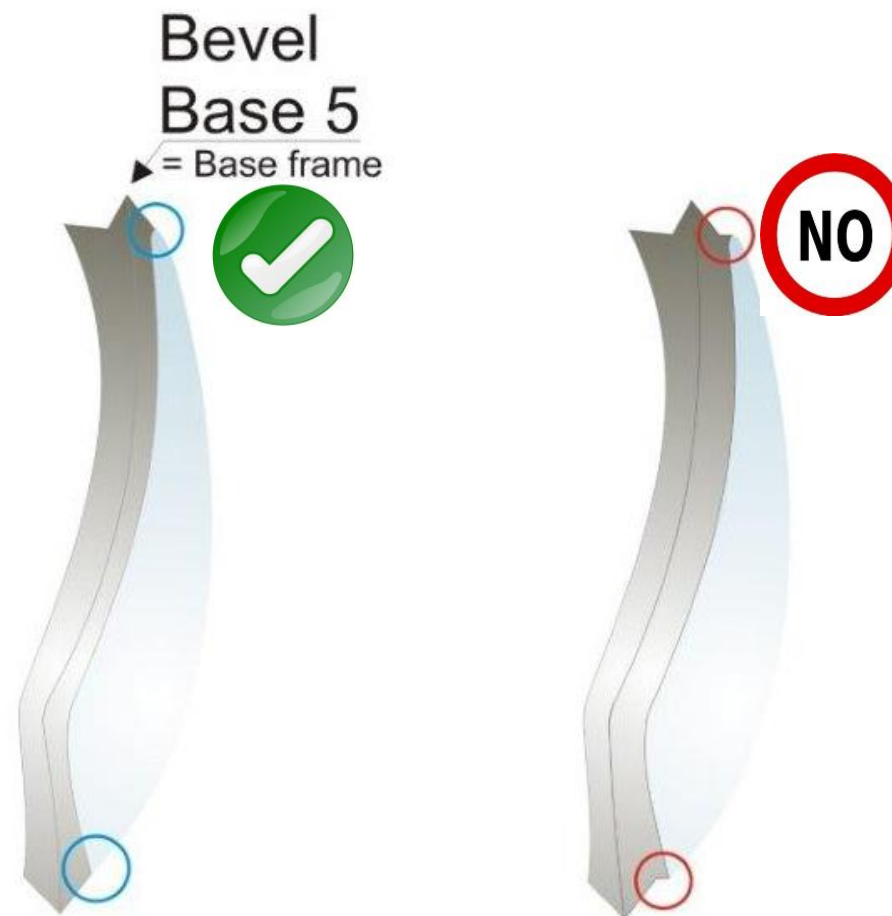
## GLAZING AID:

- Former
- OMA data




Attention: cold glazing only

# GLAZING



1. Neubau eyewear frames have a 5 base curve. It would be advantageous when the bevel of the prescription lens has the same base curve! (5 base)

1. Please make sure that the bevel of the prescription lens is ground on the outer edge of the prescription lens. 



# GLAZING



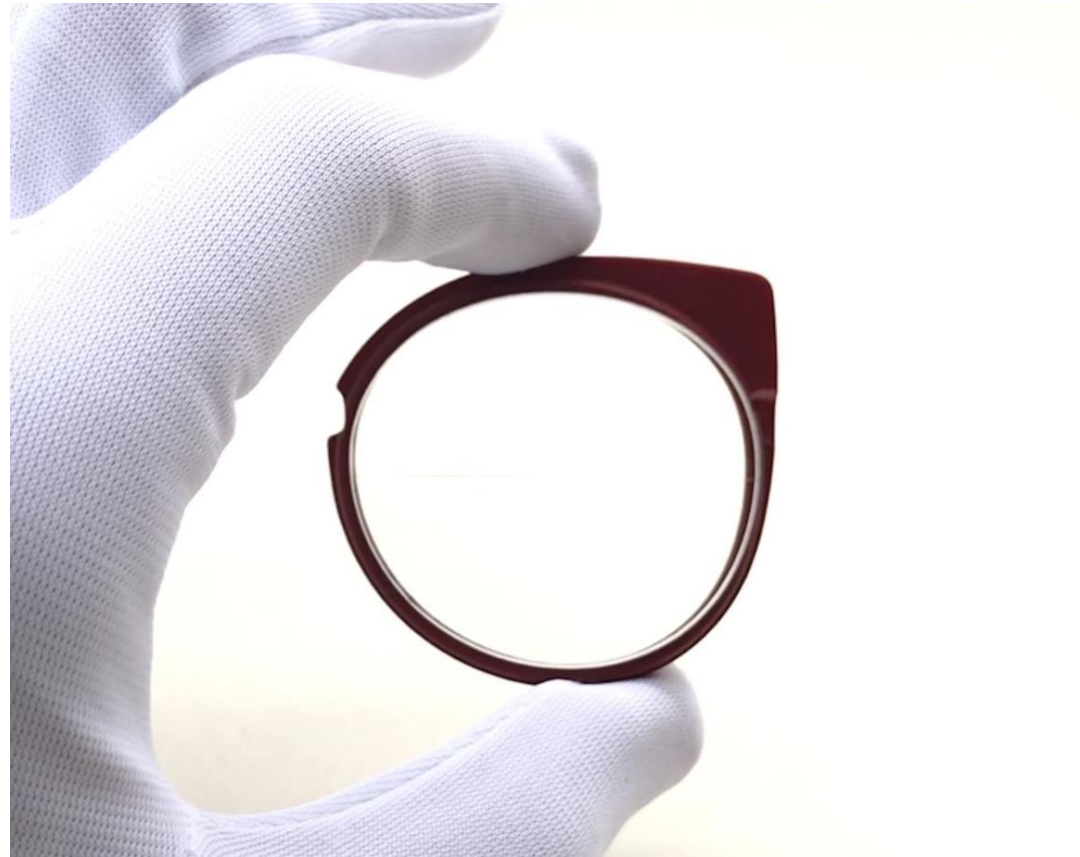
Please use OMA files or formers.  
It's also possible to trace the 3D printed part.

# GLAZING



For removing the 3D printed part  
open the inner screw.

# GLAZING



Carefully insert the lens from the backside into the 3D printed part

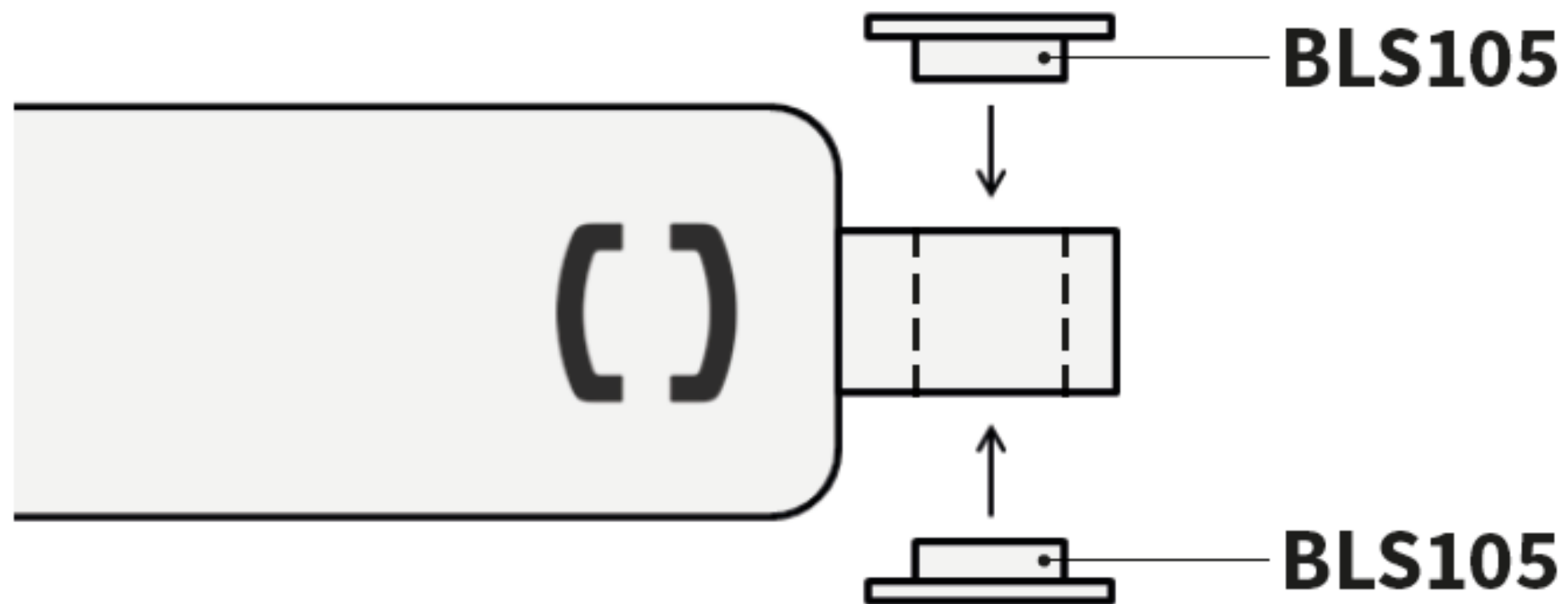
# GLAZING



Insert the 3D printed part with the already mounted lens into the frame

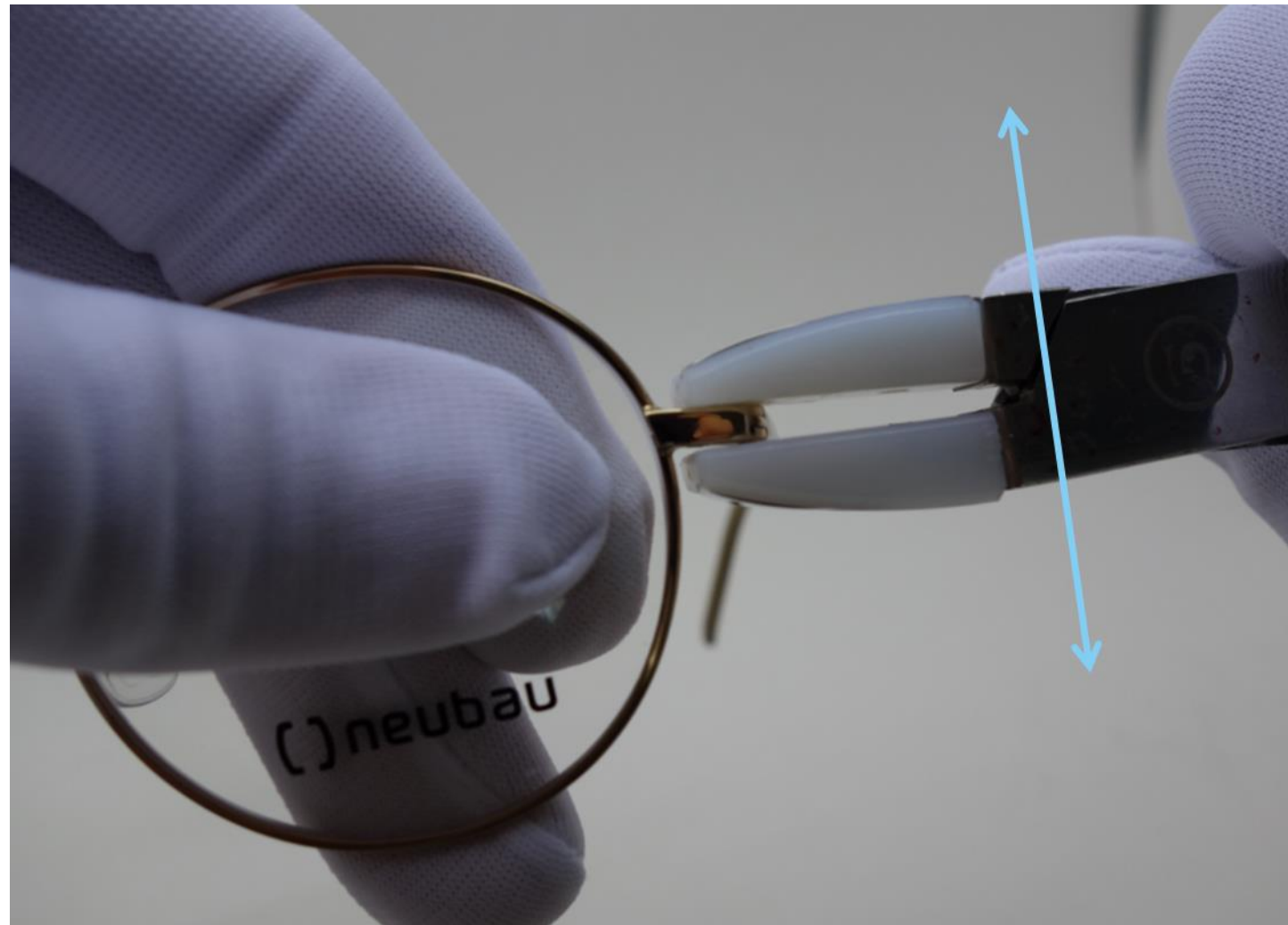


# TEMPLE CHANGING



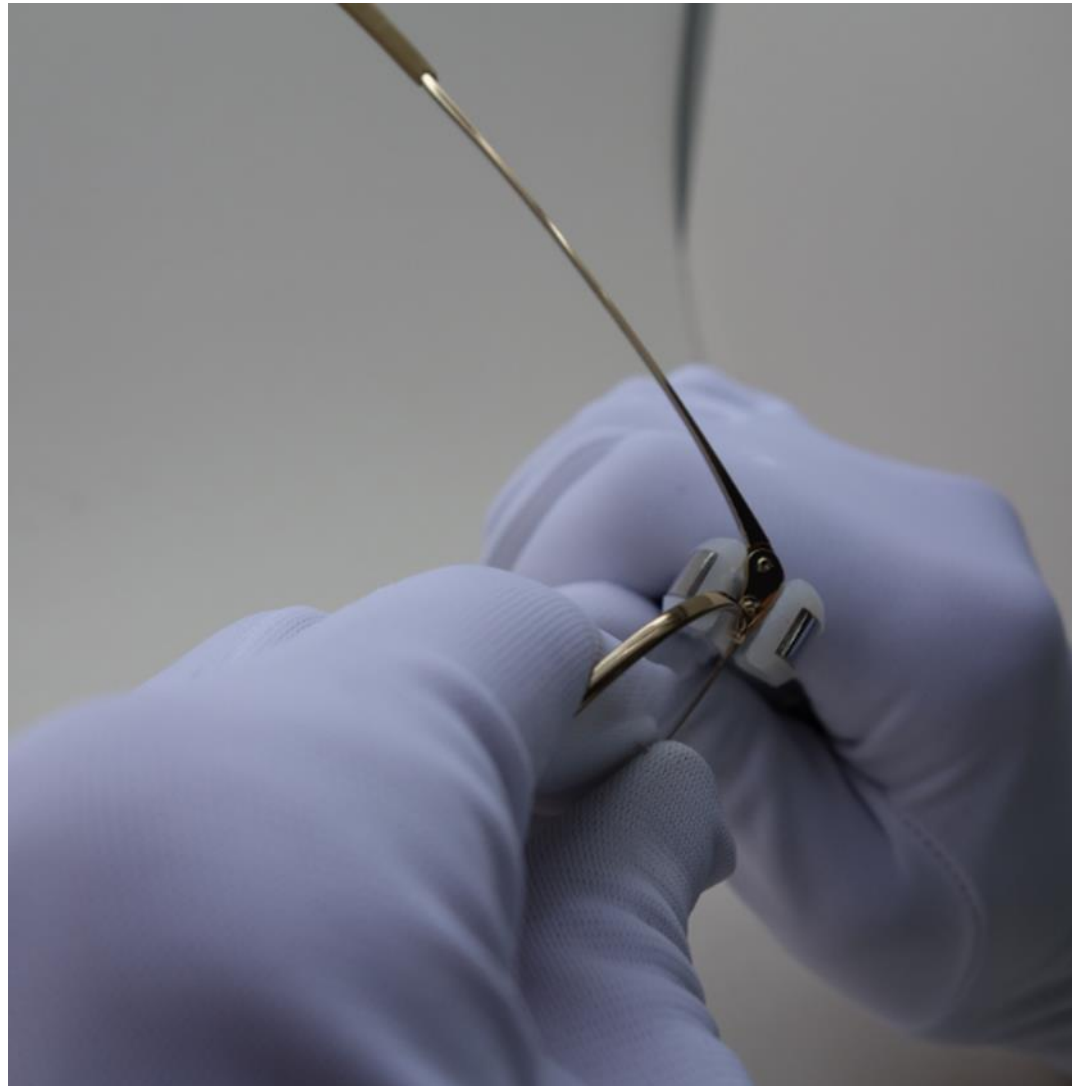
Before mounting the temples make sure that the BLS 105 is installed.

# INCLINATION



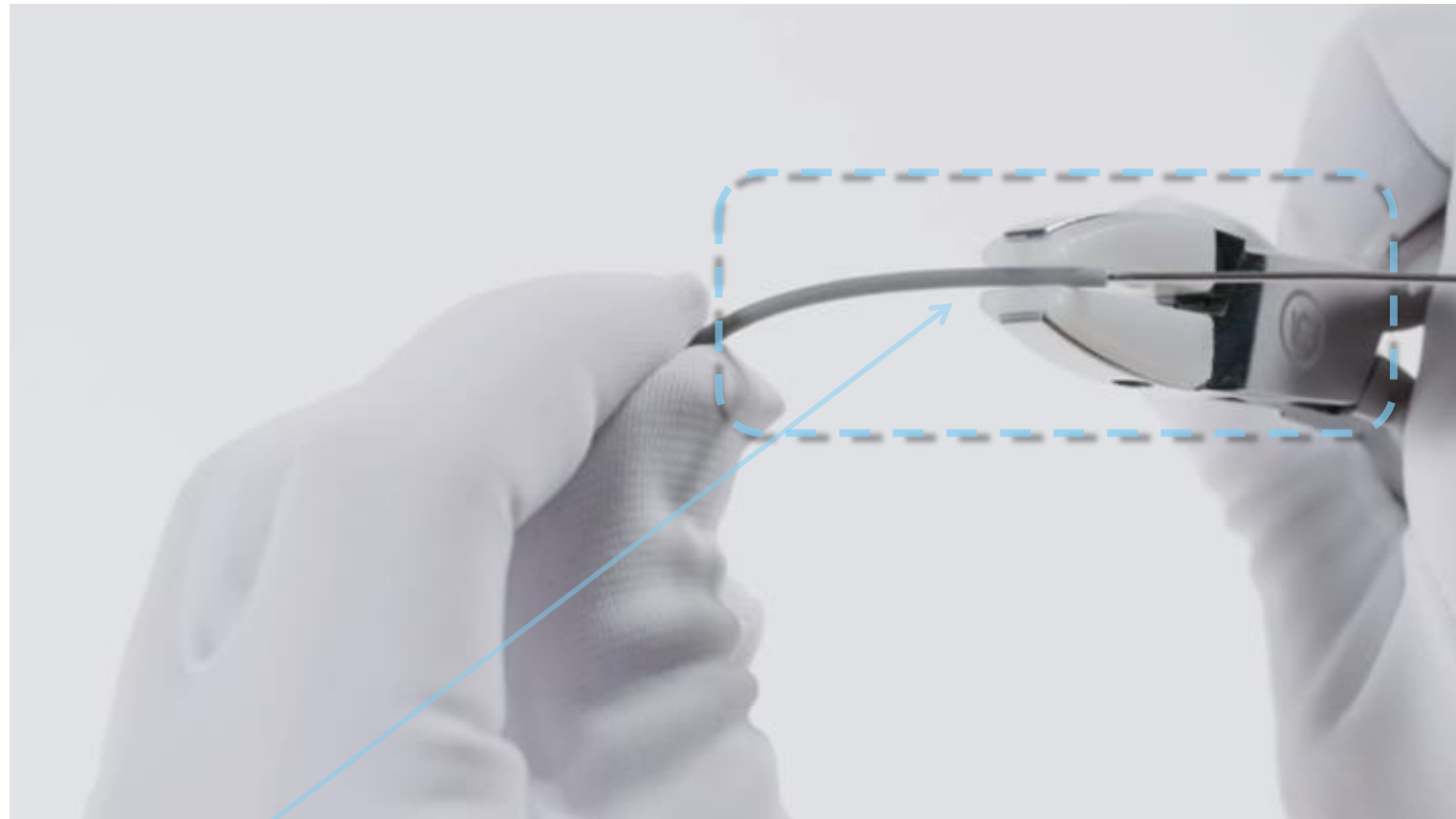
Remove the 3D part and Incline the temple with a plastic tip pliers.

# TEMPLE OPENING



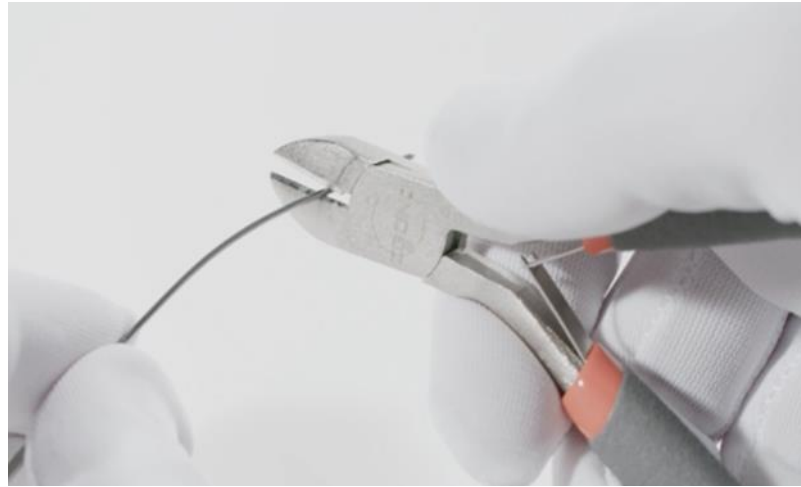
Remove the 3D part and adjust the hinge with a plastic tip pliers in the requested direction.

# TEMPLE SHORTENING



Squeeze the most forward part of the temple cover with a plastic tip pliers to break the glue bond

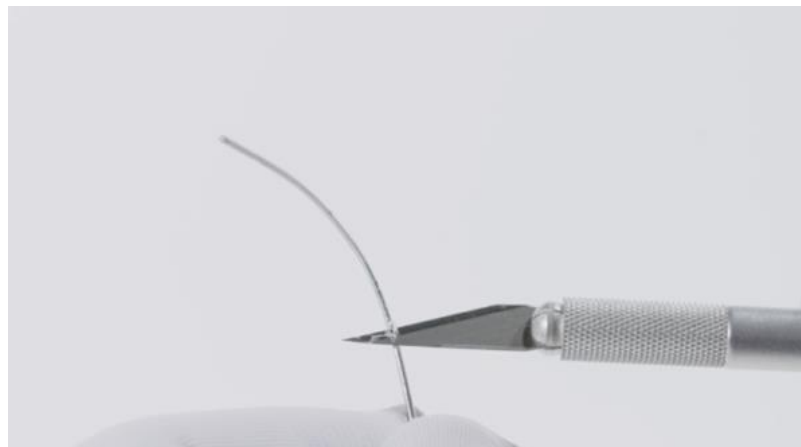
# TEMPLE SHORTENING



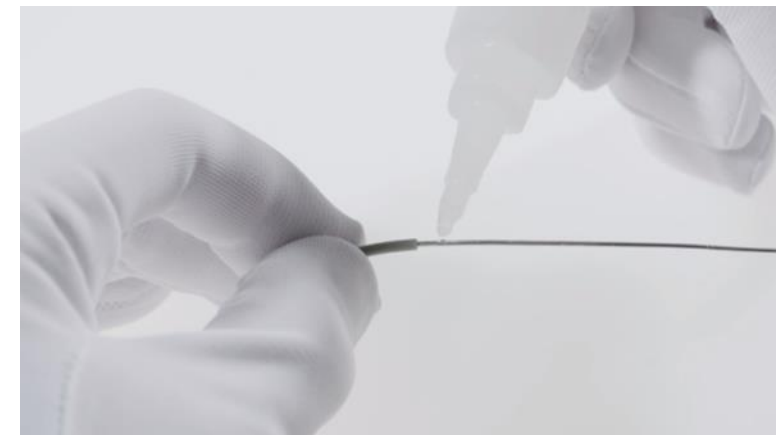
Shorten stainless steel with metal-diagonal cutter



File down sharp edges and burrs



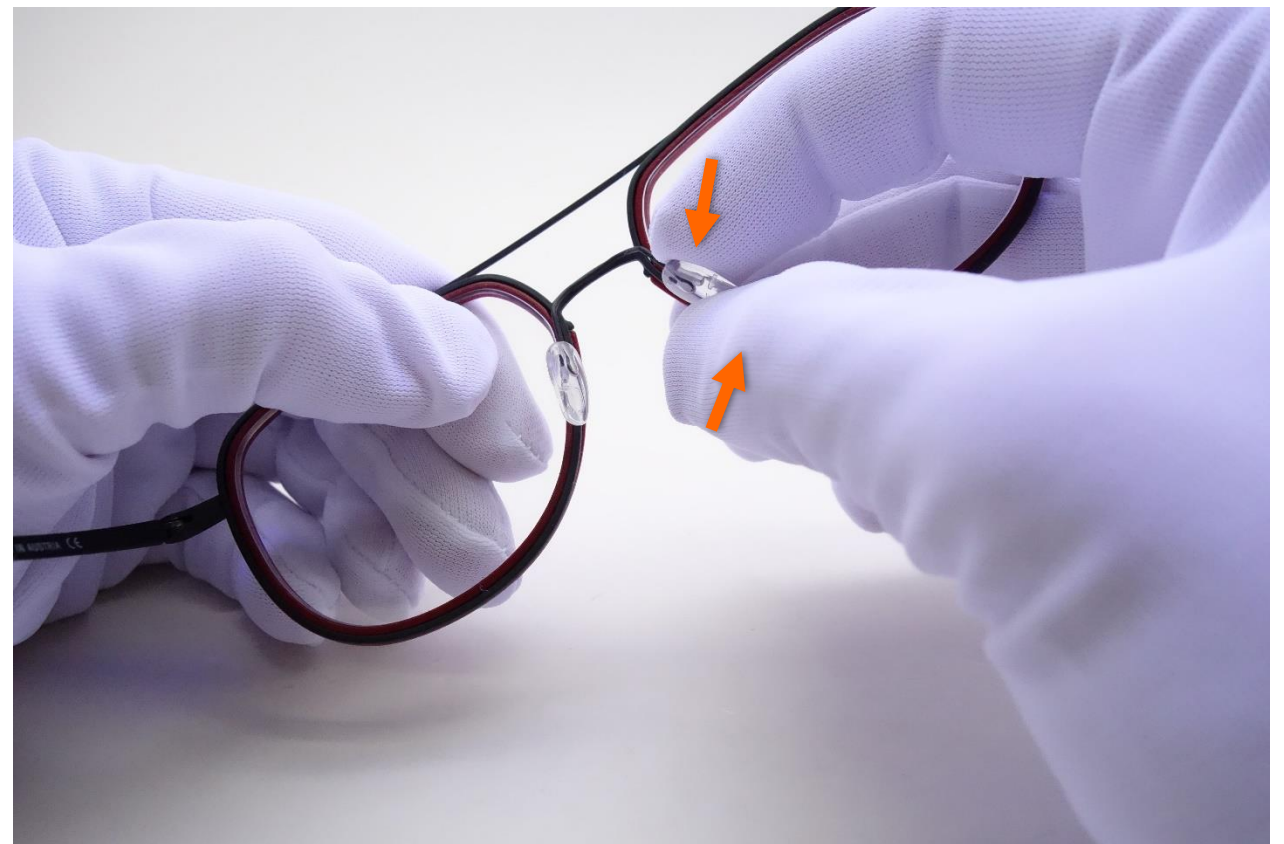
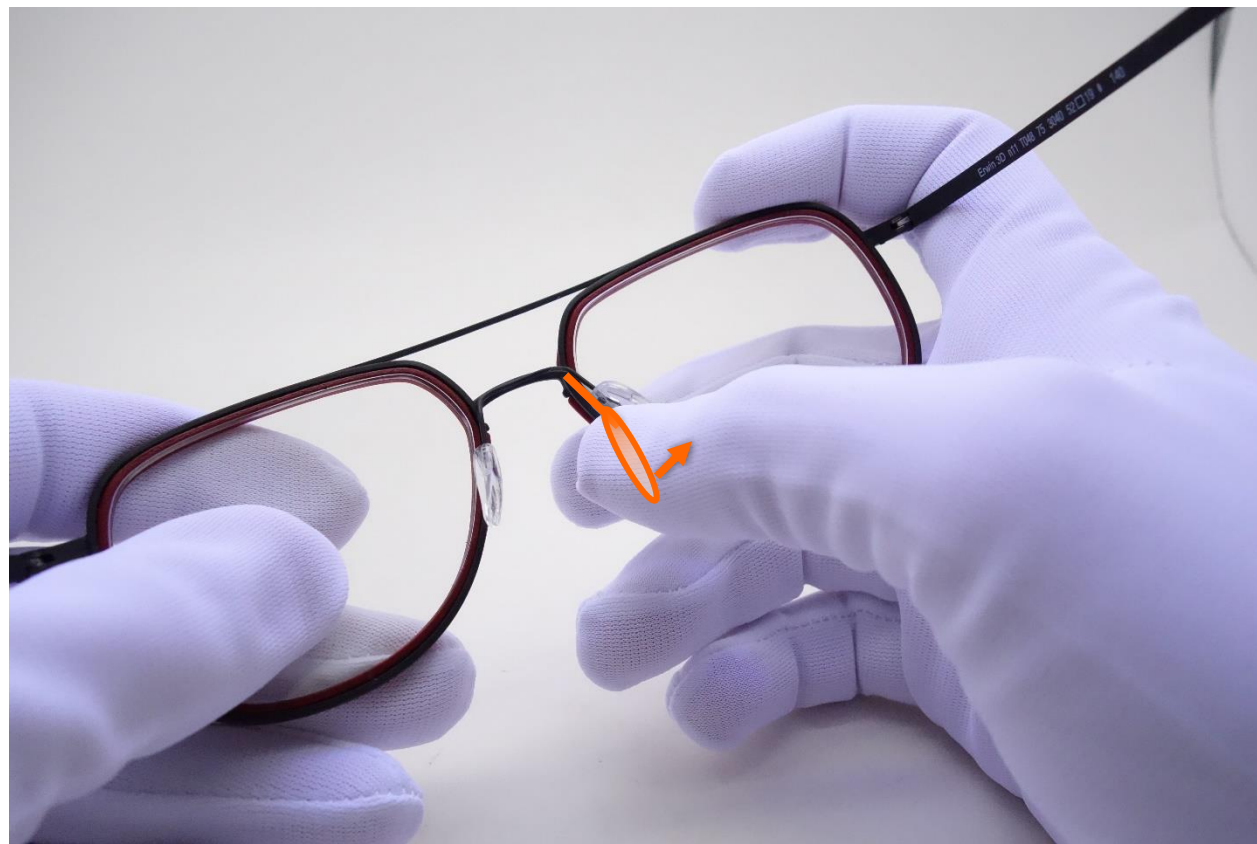
Remove remaining glue



Apply a small amount of glue on the inside of the stainless steel wire.



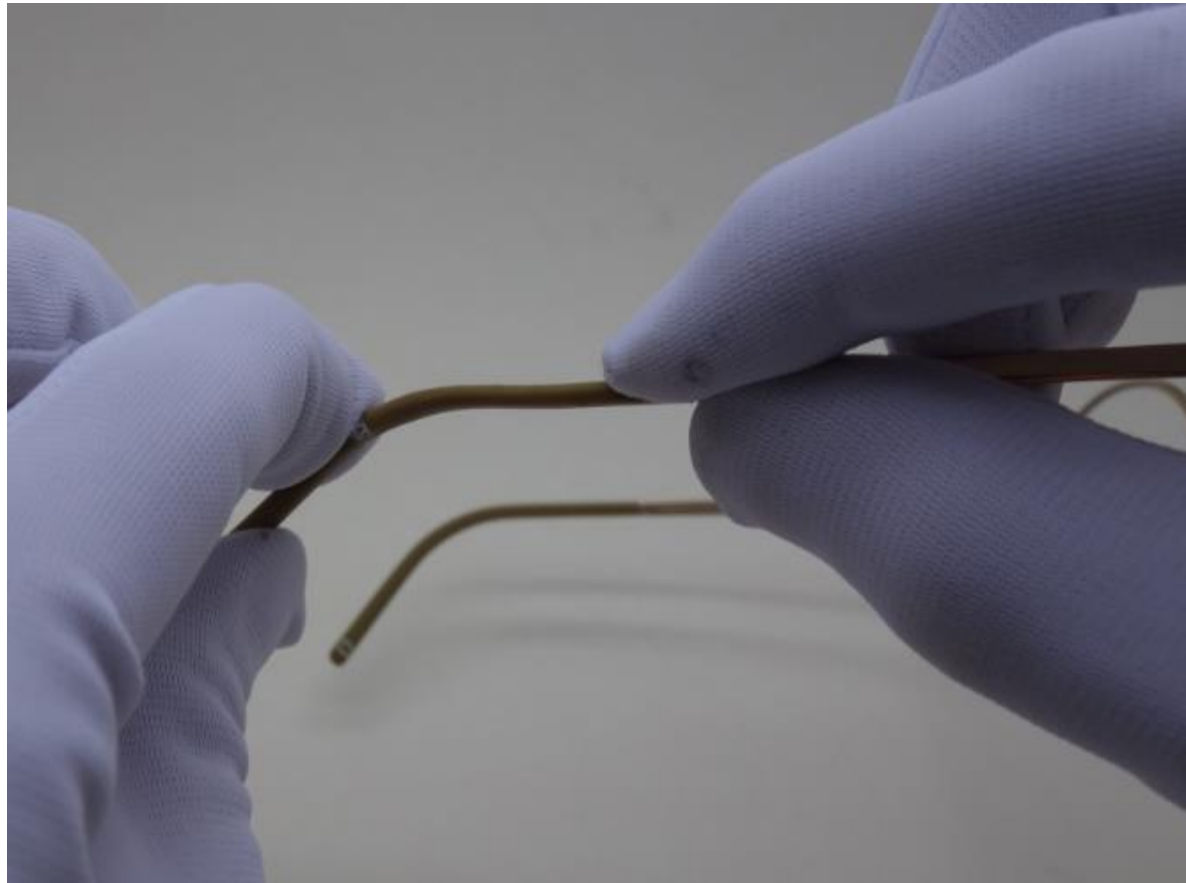
# NOSE PADS ADJUSTMENT



**( ) neubau**  
EYEWEAR



# TEMPLE ADJUSTMENT



Straighten the temple end in little steps



Adjust the temple end by bending it